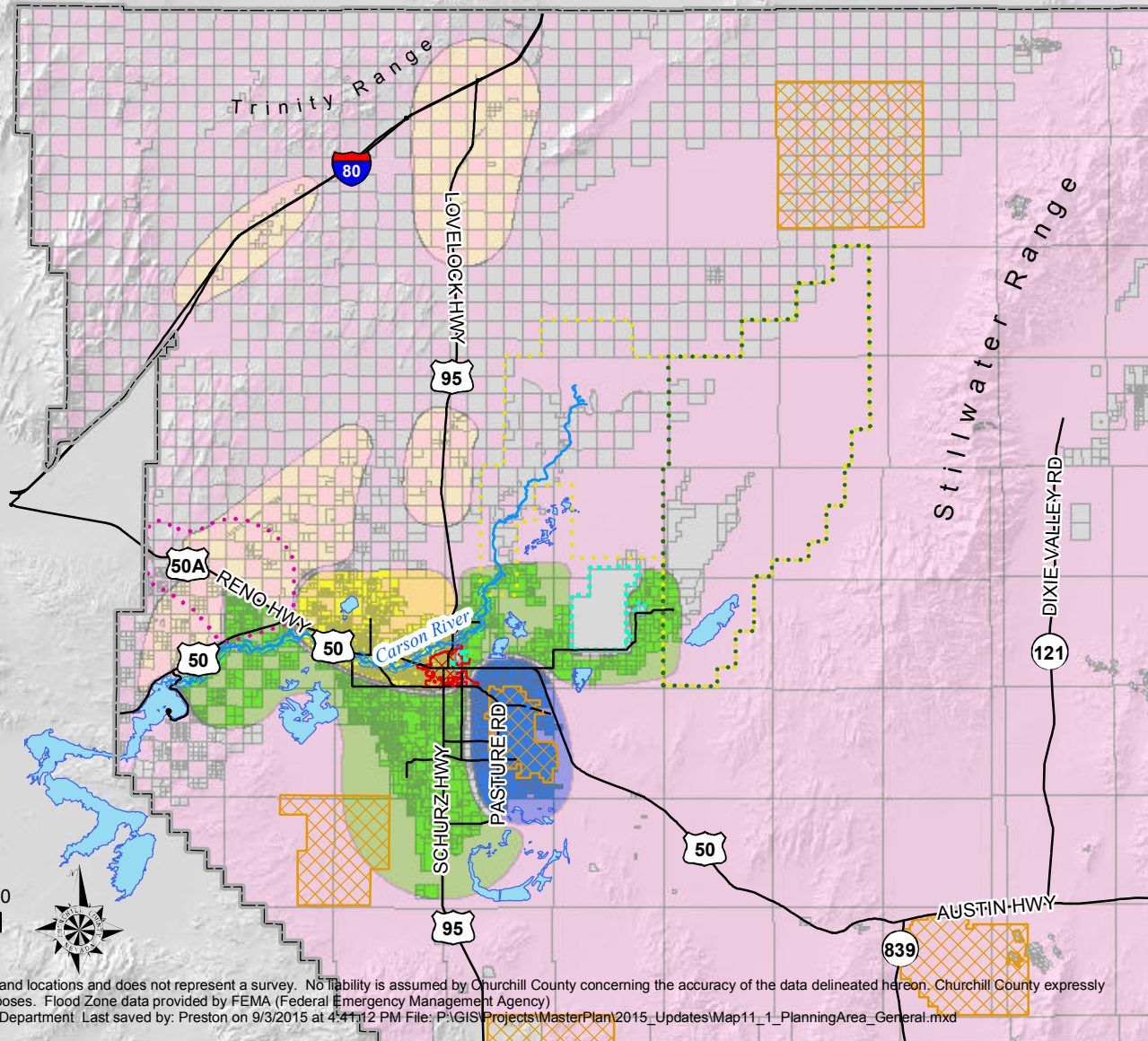
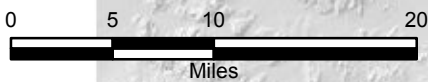


MASTER LAND USE PLAN / GROWTH MANAGEMENT PLAN

Map 11-1

- Main Roads**
- State Maintained Roads
 - - - County Maintained Roads
 - ▭ County Line
 - ▣ City of Fallon
 - ▤ Tribal Reservation Land
 - ▧ NAS Fallon and Navy Bombing Ranges
 - ⋯ Stillwater National Wildlife Refuge
 - ⋯ Proposed Stillwater National Wildlife Refuge
- Property Lines**
- ▭ Other Properties
 - ▭ BLM / Public Domain
 - ▭ Lakes and Reservoirs (Can be Dry)
 - ▭ Carson River
 - ▭ River Corridor
- Planning Area Boundaries**
- ▭ Agriculture w/ Residential
 - ▭ NASF Buffer / Agriculture
 - ▭ Industrial
 - ▭ Urbanizing Residential w/ Commercial
 - ⋯ Hazen and Swingle Bench Planning Area



This map is intended to illustrate approximate boundaries and locations and does not represent a survey. No liability is assumed by Churchill County concerning the accuracy of the data delineated hereon. Churchill County expressly disclaims any liability for use other than for illustrative purposes. Flood Zone data provided by FEMA (Federal Emergency Management Agency)
 Prepared By: Preston Denney Churchill County Planning Department Last saved by: Preston on 9/3/2015 at 4:41:12 PM File: P:\GIS\Projects\MasterPlan\2015_Updates\Map11_1-PlanningArea_General.mxd